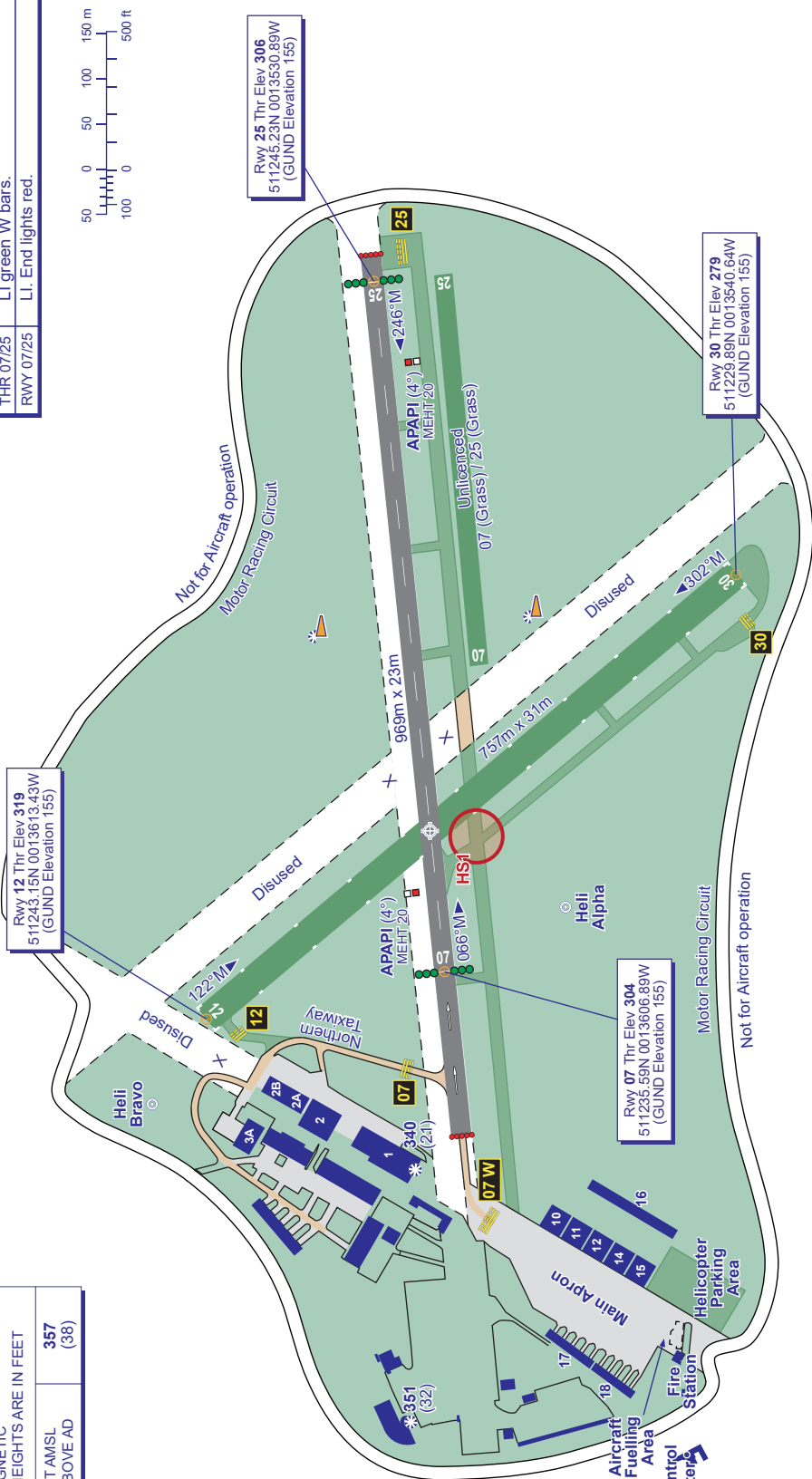


GUND (Geoid Undulation) = The height of the Geoid (MSL) above the Reference Ellipsoid (WGS 84) at the stated position.		
BEARINGS ARE MAGNETIC ELEVATIONS AND HEIGHTS ARE IN FEET	357	(38)
ELEVATIONS IN FEET AMSL		
HEIGHTS IN FEET ABOVE AD		

A
384
(65)



VAR 0.9° E - 2027
N
Annual Rate
of Change 0.17° E



RUNWAY/TAXIWAY/APRON PHYSICAL CHARACTERISTICS			
APRON / RWY / TWY	SURFACE	PCN	ELEVATION
RWY 07/25	Asphalt	-	-
RWY 12/30	Grass	-	-
Main Apron	Asphalt	-	-
Heli Alpha	Grass	-	289 ft amsl
Heli Bravo	Grass	-	326 ft amsl

Hot Spot
HS1
When runway 12/30 is in use, caution advised to correctly identify the intersection of the grass taxiways in order to not infringe the runway, which due to its greater width is more clearly visible.

A
356
(37)